

# KITCHEN MEASURING GUIDE

DIY  
CABINET  
Warehouse

DIY CABINET WAREHOUSE  
2285 GLADWIN CRES  
OTTAWA ON K1B 4K9  
P:(613)260-1721  
F:(613)260-2720  
INFO@DIYOTTAWA.COM



**DIY CABINET WAREHOUSE**  
**2285 GLADWIN CRES**  
**OTTAWA ON K1B 4K9**  
**P:(613)260-1721**  
**F:(613)738-3887**  
[INFO@DIYOTTAWA.COM](mailto:INFO@DIYOTTAWA.COM)  
[WWW.DIYOTTAWA.COM](http://WWW.DIYOTTAWA.COM)

## Step by step guide to measuring your kitchen space

You need accurate and complete measurements before you can begin planning your new kitchen space. Take time to double check all measurements for accuracy. Errors in measuring or incomplete/missing information can cause problems with the cabinet installation, and can be expensive to correct.!

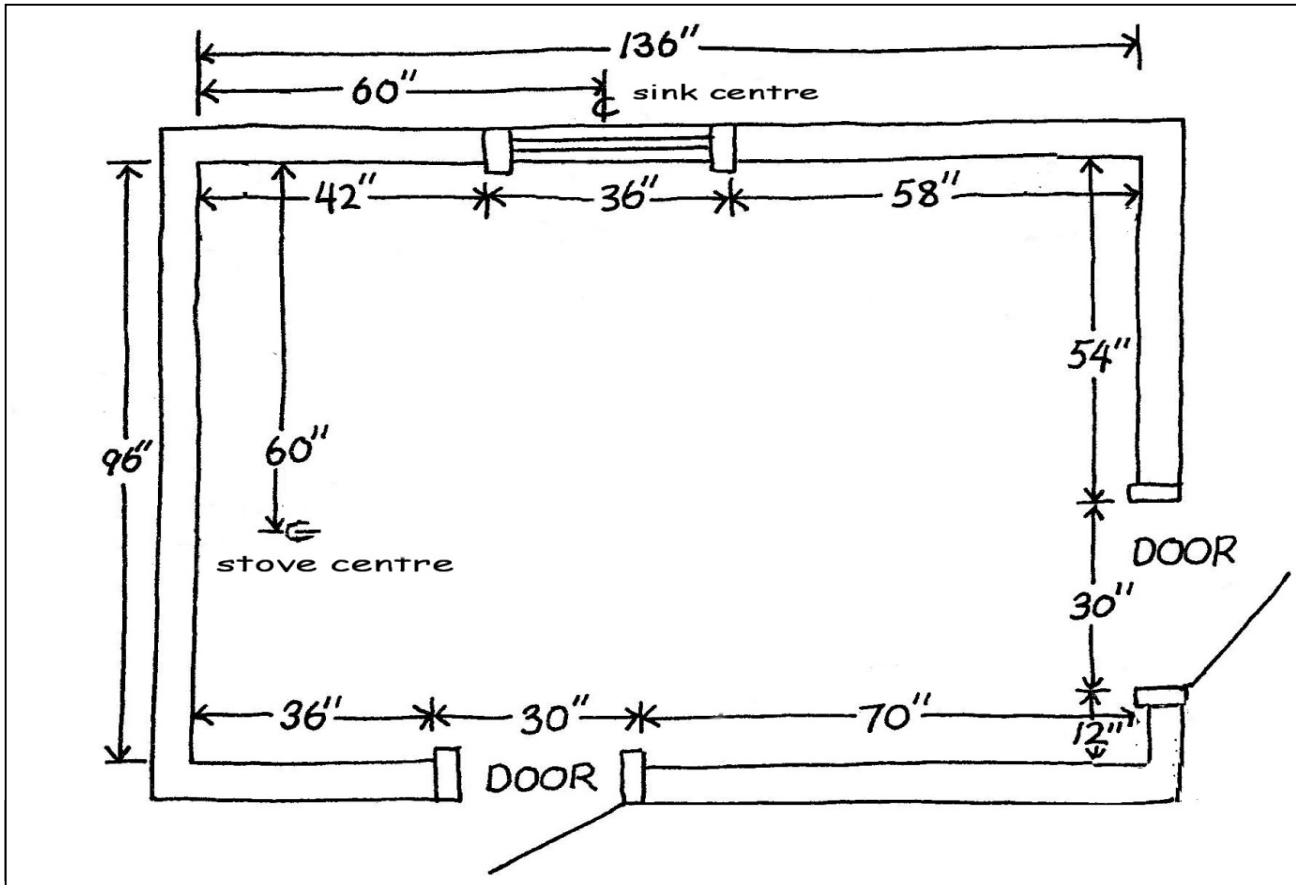
Using the attached grid, create a simple floor plan of your kitchen space. Follow the measuring procedure below to ensure that all necessary information is included. An example of a good floorplan drawing is included on the next sheet - something along these lines is a great place to start. You can also take digital pictures and print off some photos of your existing space - a picture is worth 1000 words!

1. Pick a corner of the room to begin measuring from, and measure the total length of all walls, corner to corner
2. Indicate window & door locations & sizes - be sure to include the trim! If you are replacing the trim with a larger one, be sure to include the new size in your measurements.
3. Measure the floor to ceiling height, and/or the floor to bulkhead height, and show this on your plan.
4. Add up all individual measurements and ensure they match the overall wall to wall dimensions. Double check all measurements!

### Appliances

Measure all your appliances to make sure they will fit in your new kitchen plan. Check the manufacturer's specifications to ensure that your final design provides the necessary clearances for each appliance. Gas and slide in stoves may require different installation and clearance requirements than regular electric stoves. The standard deeper fridge upper cabinets are 25" deep - fridge depths however are not standard and may protrude past the cabinets. It may be possible to buildout your cabinets deeper to accommodate a deeper fridge, or perhaps create a recess in the wall. Also, be sure to include the top hinge when measuring the height of the fridge.

# Sample Kitchen Drawing

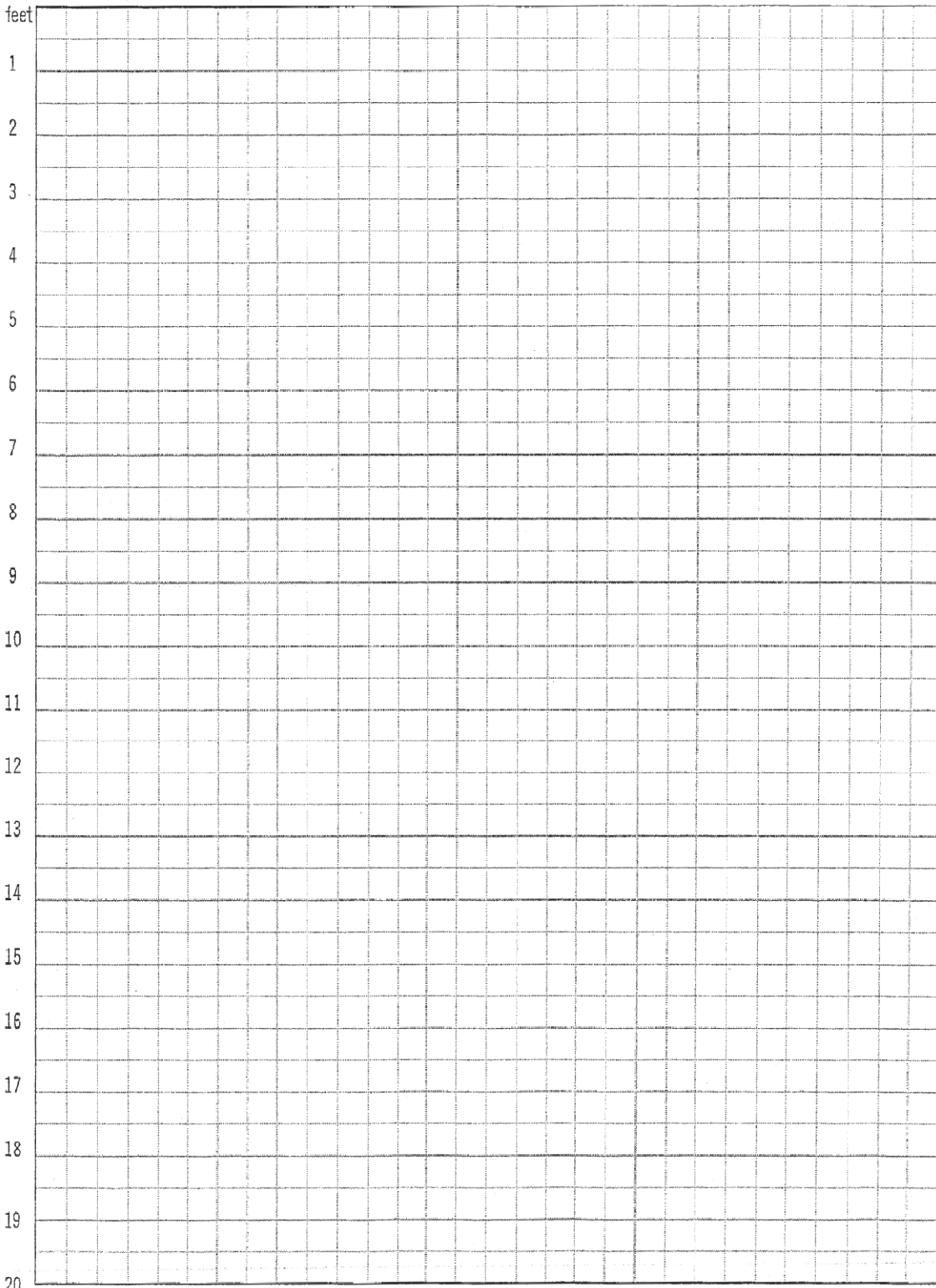


## Hints:

1. Be sure to measure all doors and entranceways into the kitchen to ensure all cabinets will fit. Take into account any stairwells, especially for basement kitchens. Older homes often have much narrower doorways and openings than newer homes.
2. Check the level of the floors - if the floors are significantly out of level a transition moulding and/or larger toekick may be required to cover any gaps from shimming cabinets
3. Review all your electrical switches & outlets and determine if you want or need to add or move any. Electrical codes have changed considerable over the years - it is a good idea to review your plans with an electrician to make sure you are up to code.
4. Make allowances for your plumbing runs - if the plumbing has to run through one or more cabinets, make sure there are no drawers in the way.
5. Check to see if your range hood is vented directly out the back through the wall. If it is, the vent hole will have to move if you are planning on relocating your stove
6. Before finalizing any plans that involve the addition, removal or relocation of any electrical, plumbing, mechanical or framing, it is strongly advised to consult a qualified contractor to ensure the changes are possible and practical.
7. Ensure that you consult local building codes prior to undertaking any major renovation work, and be sure to obtain all necessary permits from the city prior to beginning your reno.
8. Measure your floor to ceiling height, and/or floor to bulkhead height, and make sure your new kitchen will fit. Give some consideration as to how you want to finish the tops of the cabinets - crown moulding, fillers to the ceiling, bulkhead, etc.

Use this grid to show the dimensions of your kitchen!

0 feet 1 2 3 4 5 6 7 8 9 10 11 12 13 14 15



1 square = 6"